

## MASON WALL BRACKET

SKU#20362,#21299

Rated Voltage 220V-240V ~ 50Hz

Thank you for purchasing this quality LEDlux product. To ensure correct function and safety, please read and follow all instructions carefully before using the product. Please keep instructions for future reference.

### Warranty

- This light fitting is covered by a 36 month warranty.  
Please retain proof of purchase and evidence of installation by a licensed electrician.
- Warranty will be void if there is any damage due to improper usage or modification to the fitting.

### Installation requirements

- Must be installed by a licensed electrician.
- All wiring and installation of the light fitting must adhere to local and national wiring rules.  
eg. AS/NZS 3000.
- Select a suitable location for installation;
  - This product has an IP54 rating and this must be maintained during installation
  - This product is suitable for indoor or outdoor use.
  - The mounting point must support 2 times the weight of the fitting.
- Take care not to pull any electrical wires during unpacking as this may damage the connection.
- Lay out all the components on a smooth surface and make sure there are no components missing before assembling.
- Check whether the fitting has been damaged during transport. Do not operate/install any product which appears damaged in any way. Return the complete product to the place of purchase for inspection, repair or replacement.
- Ensure power to the circuit you are working on has been switched OFF.

### Installation directions

**Warning:** For your safety, all electrical connections must be performed by a licensed electrician.

Read the installation guide below, and the installation diagram to complete the installation:

1. Remove all packaging material from the product.
2. Unscrew the Fixing Cover Screws then Remove the cover.
3. Use the lamp base as a template to mark the screw positions onto the wall. Drill holes into the wall and push plastic anchors into the holes.
4. Adjust the colour temperature (3000K – 4000K – 5000K) using the CCT switch inside the canopy according to your needs.
5. Connect the mains supply wires.

#### Mains Supply Wire

Earth – Yellow/Green



Neutral – Blue or Black

Live – Brown or Red

#### Terminal marking

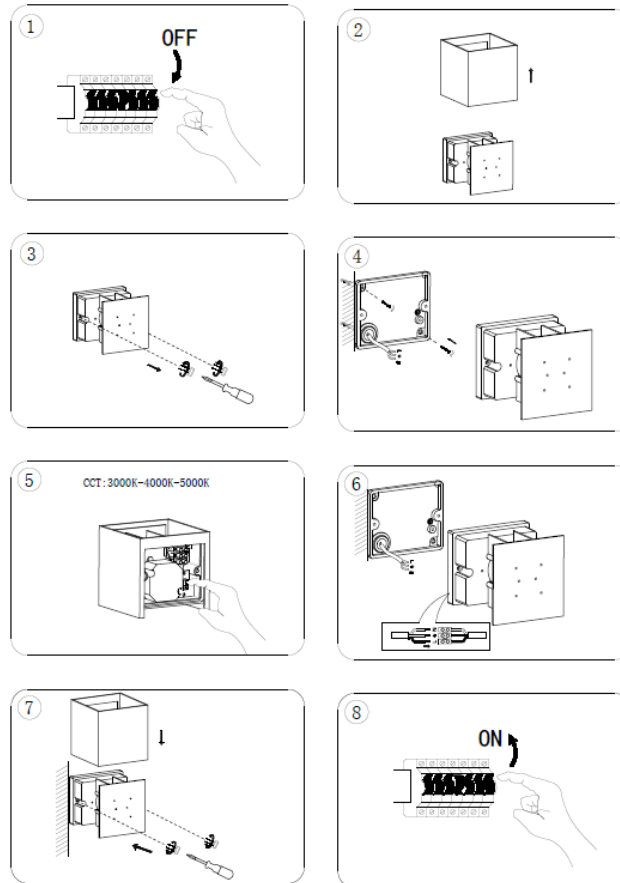
Yellow/Green or



Blue or “N”

Brown or “L”

6. Secure the mounting bracket to the mounting surface with the mounting screws.
7. Re-fit the cover, and tightly secure with cover fixing screws.
8. Adjust to the desired beam angle.
9. Switch ON to check the product has been installed correctly.



## Safety tips

- Always ensure the power is OFF and the fitting has cooled down before performing any maintenance, cleaning, changing the globe or adjustment to the fitting.
- Do not touch the globe with bare hands. Use a clean cloth, gloves or a tissue.
- To avoid injury or damage to the fitting, ensure that power leads and screws are secure before connecting the power.
- Select a suitable location away from liquids and hazards.
- Ensure that the fitting does not come in contact with corrosive chemicals, etc.
- To clean, wipe with a damp clean cloth. Never soak the fitting with water.

## Specifications

SKU #	#20362	#21299
Model #	KE-LED90002E-CCT-BK	KE-LED90002E-CCT-WH
Rated Voltage	INPUT: 220V-240V ~ 50Hz	
Wattage	11W	
LED	3000K/4000K/5000K CCT	
IP rating	IP54	
Dimmer	LUMEX Load Smart LT1D450LS; DIGINET LED Smart MEDM; Clipsal 31E2RUDM, 32E450TM, 32E450UDM, 31E2PUDM and 32ELEDM; HPM: Cat. 400T, B&P DIM-002	
Dimensions	W: 100mm E:100mm H: 100mm	

