

# Installation Instructions

## Norwest

SKU# 20094

Rated Voltage 220-240V~ 50Hz

Thank you for purchasing this quality ABODE product. To ensure correct function and safety, please read and follow all instructions carefully before assembly, installation and use of this product. Please keep instructions for future reference.

### Warranty

- This light fitting is covered by a 5 year warranty. The warranty is from date of purchase, not the date of installation.
- If the fitting is not installed by a licensed electrician the warranty will be void.
- Please retain proof of purchase and evidence of installation by a licensed electrician for any warranty claims.
- Warranty will be void if there is any damage due to improper usage or modification to the fitting.
- Failure to comply with the instructions in this manual may increase the risk of damage or injury and will void warranty.

### Installation requirements


- Must be installed by a licensed electrician.
- All wiring and installation of the light fitting must adhere to local and national wiring rules. eg. AS/NZS 3000:2007/Amendment 2:2012 Electrical installations.
- This fitting is a Class I product and must be earthed.
- This fitting is rated IP44, this must be maintained during wiring and installation.
- Do not exceed the maximum wattage rating.
- Select a suitable location for installation;
  - The mounting point must be able to support 2 times the weight of the fitting.
  - A clearance of 0.3m must be kept between the globe and the nearest wall or object etc.
  - This fitting is protected against water penetration to IP44 standards, which is water splashing from any direction.
- The fitting must not be used if the glass shade has been damaged or cracked.
- Take care not to pull any electrical wires during unpacking as this may damage the connection.
- Lay out all the components on a smooth surface and make sure there are no components missing before assembling. If parts are missing, return the complete product to the place of purchase for inspection or replacement.
- Check whether the fitting has been damaged during transport. Do not operate/install any product which appears damaged in any way. Return the complete product to the place of purchase for inspection, repair or replacement.
- Ensure power to the circuit you are working on has been switched OFF before commencing any electrical work.

### Installation directions

Remove all packaging material from the product and be careful not to throw away accessories that may be hidden within the packaging material.

1. Remove the back plate from the fitting by loosening the hex screws on the front with the allen key provided.
2. Use the back plate as a template to mark the screw positions on the wall.
3. Install the back plate on the wall by using appropriately sized mounting screws and anchors. Ensure the mounting screws and anchors used are suitable for the mounting surface and the surrounding environment.
4. Connect the mains supply wire to the terminal block. Ensure the wires are secure and no bare wires are exposed.

#### Mains Supply Wire

Earth – Yellow/Green 

Neutral – Blue or Black

Live – Brown or Red

#### Fitting Wire

Yellow/Green or 

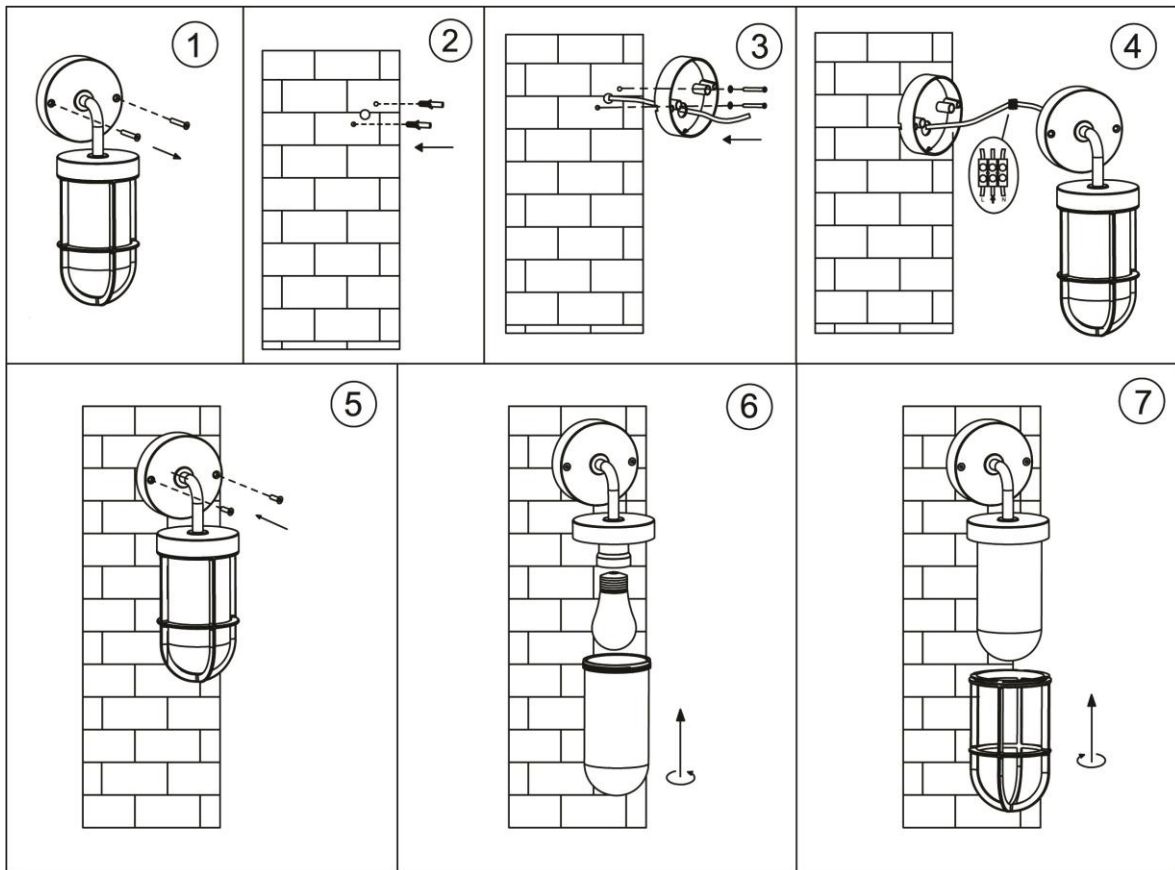
Blue

Brown

# Installation Instructions

**NOTE:** It is recommended that a non-corrosive bead of silicone be applied before installation onto the wall ensuring that no water can run down into the cabling.

5. Take note of the directional label. Install the fitting onto the back plate and tighten the hex screws at the front.
6. Install a globe (not included) into the lamp holder. Do not exceed the maximum wattage rating. Install the glass shade onto the fitting by rotating it anti-clockwise. Take care not to cross thread.
7. Install the grill by rotating it clockwise. Take care not to cross thread.
8. Make any final adjustments to the fitting and check that all parts are done up tightly before turning on.



## Safety tips

- Always ensure the power is OFF and the fitting has cooled down before performing any maintenance, cleaning, changing the globe or making any adjustment to the fitting.
- To avoid injury or damage to the fitting, ensure that power leads and screws are secure before connecting the power.
- Select a suitable location away from liquids and hazards.
- Ensure that the fitting does not come in contact with corrosive chemicals etc.
- To clean, wipe with a damp clean cloth. Never soak the fitting with water.

## Specifications

SKU #	20094
Colour	Solid Brass
Rated Voltage	220-240V~ 50Hz
Rated Wattage	45W MAX
Lamp Holder	ES / E27
IP Rating	IP44
Weight	1.3kg
Dimensions	H:315mm W:105mm E:116.5mm

