

# Installation Instructions

## CASTANA 1L

SKU# 19601, #19602, #19811

Rated Voltage 220-240V~ 50Hz

Thank you for purchasing this quality LEDlux product. To ensure correct function and safety, please read and follow all instructions carefully before assembly, installation and use of this product. Please keep instructions for future reference.

### Warranty

- This luminaire is covered by a 3 years warranty. The warranty is from date of purchase, not the date of installation.
- If the luminaire is not assembled and installed by a licensed electrician the warranty will be void.
- Please retain proof of purchase and evidence of installation by a licensed electrician.
- Warranty will be void if there is any damage due to improper usage or modification to the luminaire.
- Failure to comply with the instructions in this manual may increase the risk of damage or injury and will void warranty.


### Installation requirements

- Must be assembled and installed by a licensed electrician.
- All wiring and installation of the luminaire must adhere to latest local and national wiring rules.  
Eg. AS/NZS 3000 Electrical installations.
- Do not exceed the maximum wattage rating.
- Select a suitable location for installation:
  - This luminaire is protected against water penetration to IP65 standards, which is against low pressure jets of water from all practicable direction. This must be maintained during installation.
  - It is suitable for indoor or outdoor use.
  - The mounting point must support 2 times the weight of the luminaire.
- Take care not to pull any electrical wires during unpacking as this may damage the connection.
- Lay out all the components on a smooth surface and make sure there are no components missing before assembling. If parts are missing, return the complete product to the place of purchase for inspection or replacement.
- Check whether the luminaire has been damaged during transport. Do not operate/install any product which appears damaged in any way. Return the complete product to the place of purchase for inspection, repair or replacement.

### Installation directions

1. Remove all packaging material from the fitting.
2. Turn OFF the power to the fitting. Fig.1
3. Remove the mounting bracket from the lamp base. Use the mounting bracket as a template to mark the position of the holes on the wall.
4. Drill holes into the wall and insert the plastic anchors into the hole. Ensure the anchors used are suitable for installation surface. Fig.2
5. Secure the mounting bracket onto the wall with screws provided. Ensure the screws used are suitable for the mounting surface. Fig. 3.
6. This product has a colour switching function (**3000K, 4000K**). Select the color temperature by sliding the switch. Fig. 4
7. Connect the mains supply wire to the light fitting using the terminal block provided. Ensure that the wires are secure and no bare wires are exposed. Fig. 4

#### Mains Supply Wire

Earth – Yellow/Green 

Neutral – Blue or Black

Live – Brown or Red

#### Fitting Wire

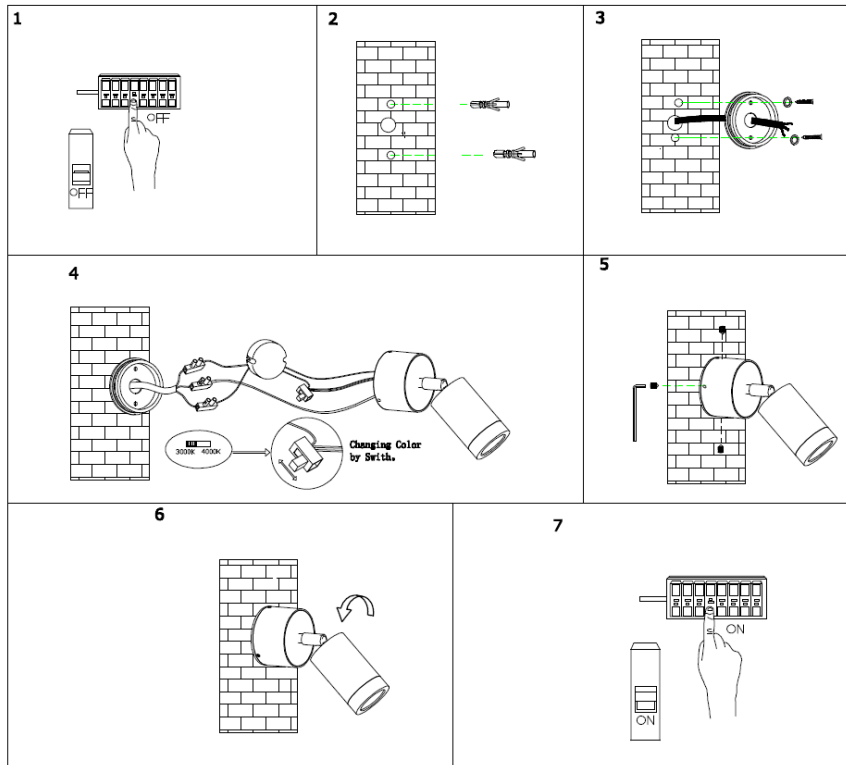
Yellow/Green or 

Blue N

Brown L

# Installation Instructions

8. Secure the lamp body to the mounting bracket by tightening the screws on the side with the Allen key provided. Fig. 5
9. Adjust the LED heads to your preferred angle. Fig. 6
10. Turn ON the power to the fitting.



## Safety tips

- Always ensure the power is OFF and the luminaire has cooled down before performing any maintenance, cleaning, changing the globe or making any adjustment to the luminaire.
- To avoid injury or damage to the luminaire, ensure that power leads and screws are secure before connecting the power.
- The luminaire must not be used if the shade has been cracked. Replace any cracked protective shield.
- Ensure that the luminaire does not come in contact with corrosive chemicals/solvents or abrasive cleaners etc.
- To clean, wipe with a damp clean cloth. Do NOT soak or immerse the product in water or other liquids.

## Specifications

SKU #	#19601	#19602	#19811
Model	KE-5010-A-COB-BK-CCT	KE-5010-A-COB-COP-CCT	KE-5010-A-COB-AL-CCT
Color	Black	Copper	Aluminium
Rated Voltage	220-240V ~ 50Hz		
Rated Wattage	9W		
LED	CCT (3000K,4000K)		
IP Rating	IP65		
Dimensions	W: 155mm * H:155mm* E: 206mm		